



SY 2017-2018

Facts & Figures

CNMI PUBLIC SCHOOL SYSTEM

STUDENTS FIRST



CNMI Public School System
P.O. Box 501370 CK, Saipan, MP 96950
Office (670) 237-3061 • Fax (670) 664-3798
www.cnmipss.org



Reserved AdvancED is dedicated to advancing excellence in education worldwide. The North Central Association Commission on Accreditation and School Improvement (NCA CASI), Northwest Accreditation Commission (NWAC), and the Southern Association of Colleges and Schools Council on Accreditation and School Improvement (SACS CASI) are accreditation divisions of AdvancED.

"The CNMI Public School System is accredited by the North Central Association Commission on Accreditation and School Improvement."

STUDENTS FIRST

Content

PAGE	6	Official Enrollment Count
	7	Time Series Enrollment Data
	8	Student Enrollment By Grade & Gender
	9	Pre-K to 12th Grade: Student-Classroom Teacher Ratio
	10	Early Learning Programs: Student-Classroom Teacher Ratio & Staffing Pattern
	11	Pre-K to 12th Grade Enrollment By Student Groups: Ethnicity & Citizenship
	12	Pre-K to 12th Grade Enrollment By Age & Grade Level
	13	Pre-K to 12th Grade: Special Education Enrollment
	14	Free Meal Eligibility Count
	15	Distance Education Enrollment
	16	High School Graduate Data SY 2016-2017
	17	High School Graduate Definitions
	18	Dropout Data
	19	Dropout Definitions
	20	K-12th School Personnel Count Summary
	21	K-12th School Staffing Pattern - Administrators
	22	K-12th School Staffing Pattern - Instructional Staff
	23	Elementary School Staffing Pattern: Support Staff

Content

PAGE	24	Secondary School Staffing Pattern: Support Staff
	25	Central Office Staffing Pattern
	29	Budget Allocation for Fiscal Year 2017 and 2018
	30	CNMI PSS Organizational Chart



“The goal is to turn data into information, and information into insight.”

~ Carly Fiorina, former executive, president, and chair of Hewlett-Packard Co.

“Things get done only if the data we gather can inform and inspire those in a position to make [a] difference.”

~ Mike Schmoker, former school administrator, English teacher and football coach, author.

*The **SY 2017-2018 Facts & Figures** was prepared by the CNMI PSS Department of Accountability, Research, & Evaluation through the Office of Records & Data Management and in collaboration with the Data Stewards and/or Data Custodians from the schools, programs, and offices.*

Official Enrollment Count

	School Year 2014-2015	School Year 2015-2016	School Year 2016-2017		School Year 2017-2018	
Early Learning Programs	1st QTR	1st QTR	1st QTR	Rate	1st QTR	Rate
Early Intervention Program	86	62	50	-19.4%	57	14.0%
Early Head Start Program*	-	24	32	33.3%	32	0.0%
Pre-K (Head Start Program)	462	462	399	-13.6%	395	-1.0%
Total	548	548	481	-12.2%	484	0.6%

*Early Head Start Program started as of SY 15-16

Elementary Schools	1st QTR	1st QTR	1st QTR	Rate	1st QTR	Rate
Garapan Elementary School (GES)	826	818	634	-22.5%	595	-6.2%
Gregorio T. Camacho Elementary School (GTC)	313	324	305	-5.9%	309	1.3%
Kagman Elementary School (KAG)	381	362	400	10.5%	437	9.3%
Koblerville Elementary School (KES)	603	616	627	1.8%	648	3.3%
Oleai Elementary School (OES)	520	458	451	-1.5%	454	0.7%
San Vicente Elementary School (SVS)	672	622	647	4.0%	652	0.8%
Sinapalo Elementary School (SNP)	194	202	204	1.0%	195	-4.4%
Tinian Elementary School (TIN)	297	308	268	-13.0%	258	-3.7%
William S. Reyes Elementary School (WSR)	761	642	679	5.8%	704	3.7%
Total	4,567	4,352	4,215	-3.1%	4,252	0.9%

Middle and Jr. High Schools	1st QTR	1st QTR	1st QTR	Rate	1st QTR	Rate
Chacha Oceanview Middle School (CHA)	257	258	233	-9.7%	208	-10.7%
Dandan Middle School (DMS)	365	338	364	7.7%	342	-6.0%
Dr. Rita H. Inos Jr. Sr. High School (RHI)	65	57	66	15.8%	69	4.5%
Francisco Mendiola Sablan Middle School (FMS)	296	289	299	3.5%	306	2.3%
Hopwood Middle School (HMS)	755	817	913	11.8%	917	0.4%
Tanapag Middle School (TMS)	168	171	176	2.9%	147	-16.5%
Tinian Jr. Sr. High School (TJSHS)	112	83	83	0.0%	86	3.6%
Total	2,018	2,013	2,134	6.0%	2,075	-2.8%

High Schools	1st QTR	1st QTR	1st QTR	Rate	1st QTR	Rate
Da'Ok Academy (DA)	-	-	-	-	65	-
Dr. Rita H. Inos Jr. Sr. High School (RHI)	174	207	155	-25.1%	151	-2.6%
Kagman High School (KHS)	641	649	586	-9.7%	594	1.4%
Marianas High School (MHS)	1500	1,611	1,664	3.5%	1601	-4.0%
Saipan Southern High School (SSHS)	818	805	808	0.4%	780	-3.5%
Tinian Jr. Sr. High School (TJSHS)	165	188	177	-5.9%	176	-0.6%
Total	3,928	3,460	3,390	-1.9%	3,368	-0.7%

Time Series Enrollment Data

Elementary Schools	SY 2012-2013	SY 2013-2014	SY 2014-2015	SY 2015-2016	SY 2016-2017	SY 2017-2018
Dandan Elementary School* (DES)	360	353	-	-	-	-
Garapan Elementary School (GES)	879	858	826	818	634	595
Gregorio T. Camacho Elementary School (GTC)	209	205	313	324	305	309
Kagman Elementary School (KAG)	514	423	381	362	400	437
Koblerville Elementary School (KES)	412	413	603	616	627	648
Oleai Elementary School (OES)	528	498	520	458	451	454
San Antonio Elementary School* (SES)	309	293	-	-	-	-
San Vicente Elementary School (SVS)	566	538	672	622	647	652
Sinapalo Elementary School (SNP)	194	184	194	202	204	195
Tanapag Elementary School* (TAN)	184	186	-	-	-	-
Tinian Elementary School (TIN)	262	277	297	308	268	258
William S. Reyes Elementary School (WSR)	736	756	761	642	679	704
Total	5,153	4,984	4,567	4,352	4,215	4,252

*Transitioned to "Middle School" in SY 2014-2015.

Middle & Jr. High School						
Chacha Oceanview Middle School (CHA)	340	404	257	258	233	208
Dandan Middle School (DMS)	-	-	365	338	364	342
Dr. Rita H. Inos Jr. Sr. High School (RHI)	100	88	65	57	66	69
Francisco M. Sablan Middle School (FMS)	-	-	296	289	299	306
Hopwood Middle School (HMS)	1,192	1,213	755	817	913	917
Tanapag Middle School (TMS)	-	-	168	171	176	147
Tinian Jr. Sr. High School (TJSHS)	94	120	112	83	83	86
Total	1,726	1,825	2,018	2,013	2,134	2,075

High School						
Da'Ok Academy (DA)*	-	-	-	-	-	66
Dr. Rita H. Inos Jr. Sr. High School (RHI)	162	170	174	207	155	151
Kagman High School (KHS)	635	636	641	649	586	594
Marianas High School (MHS)	1,449	1,489	1,500	1,611	1,664	1,601
Saipan Southern High School (SSHs)	845	841	818	805	808	780
Tinian Jr. Sr. High School (TJSHS)	159	162	165	188	177	176
Total	3,250	3,298	3,298	3,460	3,390	3,368

*Official new alternative high school as of SY 17-18

Early Learning Programs & K-12						
Early Intervention	55	69	86	62	50	57
Early Head Start*	-	-	-	24	32	32
Head Start	462	462	462	462	399	395
Elementary	5,153	4,984	4,567	4,352	4,215	4,252
Middle & Jr. High School	1,726	1,825	2,018	2,013	2,134	2,075
High School	3,250	3,298	3,298	3,460	3,390	3,368
Total Enrollment	10,646	10,638	10,431	10,373	10,220	10,179

*New Program started as of SY 15-16

Yearly Increase	-	-0.1%	-1.9%	-0.6%	-1.5%	-0.4%
------------------------	---	-------	-------	-------	-------	-------

Student Enrollment By Grade & Gender

Early Learning Programs

Gender	Early Intervention	Early Head Start	Pre-K (Head Start Program)	Total
Male	36	15	204	255
Female	21	17	191	229
Total	57	32	395	484

Elementary

Gender	K	1st	2nd	3rd	4th	5th	6th	Total
Male	273	341	404	404	406	374	30	2232
Female	225	351	343	361	339	361	40	2020
Total	498	692	747	765	745	735	70	4252

Secondary

Gender	6th	7th	8th	9th	10th	11th	12th	Total
Male	338	376	354	558	432	421	380	2859
Female	317	327	363	467	396	366	348	2584
Total	655	703	717	1025	828	787	728	5443

Special Needs Students

Gender	Early Childhood*	K-12th (Public Schools)	K-12th (Private Schools)	Total
Male	48	568	29	645
Female	16	255	11	282
Total	64	823	40	927

*Students who are receiving Special Education Services in the Early Head Start and Pre-K Head Start programs are enrolled into the Early Childhood Program. This data includes students who are enrolled in Private Schools & who are NOT enrolled in any school or Pre-K program.

Pre-K to 12th Grade: Student-Classroom Teacher Ratio

	Student Enrollment	Total No. of Teachers	Teacher-Student Ratio
Early Intervention Program	57	2	1:29
Early Head Start	32	7	1:5
Pre-K (Head Start)	395	15	1:26
Garapan Elementary School <small>(GES)</small>	595	29	1:21
Gregorio T. Camacho Elementary School <small>(GTC)</small>	309	14	1:22
Kagman Elementary School <small>(KAG)</small>	437	21	1:21
Koblerville Elementary School <small>(KES)</small>	648	23	1:28
Oleai Elementary School <small>(OES)</small>	454	21	1:22
San Vicente Elementary School <small>(SVS)</small>	652	29	1:22
Sinapalo Elementary School <small>(SNP)</small>	195	13	1:15
Tinian Elementary School <small>(TIN)</small>	258	14	1:18
William S. Reyes Elementary School <small>(WSR)</small>	704	28	1:25
Chacha Oceanview Middle School <small>(CHA)</small>	208	14	1:15
Dandan Middle School <small>(DMS)</small>	342	22	1:16
Dr. Rita H. Inos Jr. Sr. High School <small>(RHI)</small>	69	4	1:17
Francisco M. Sablan Middle School <small>(FMS)</small>	306	15	1:20
Hopwood Middle School <small>(HMS)</small>	917	44	1:21
Tanapag Middle School <small>(TMS)</small>	147	12	1:12
Tinian Jr. Sr. High School <small>(TJSHS)</small>	86	8	1:11
Da'Ok Academy <small>(DA)</small>	66	4	1:17
Dr. Rita H. Inos Jr. Sr. High School <small>(RHI)</small>	151	10	1:15
Kagman High School <small>(KHS)</small>	594	26	1:23
Marianas High School <small>(MHS)</small>	1601	48	1:33
Saipan Southern High School <small>(SSH5)</small>	780	30	1:26
Tinian Jr. Sr. High School <small>(TJSHS)</small>	176	12	1:15
Total	10,179	465	1:22

Note: The above information excludes the following teaching staff: Teacher Aides (CCLHS & SpEd), CCLHS Instructors (Elementary Schools Only), SpEd Classroom Teachers, Literacy Coaches, and Interpreters.

Early Learning Programs: Student-Classroom Teacher Ratio & Staffing Pattern

Early Intervention

Student-Teacher Ratio

Center	Enrollment	Teacher	Teacher-Student Ratio
Child Development Assistance Center (CDAC)	57	2	1:29
Total	57	2	1:29

Early Head Start

Center	Enrollment	Instructor	Instructor-Student Ratio
Chalan Kanoa	16	3	1:5
Kagman	8	2	1:4
Dandan	8	2	1:4
Total	32	7	1:7

Pre-K (Head Start)

Center	Enrollment	Teacher/Instructor	Teacher-Student Ratio
Tanapag (TANC)	34	2/0	1:17
Joaquina M. Rabauliman Center (JMR)	66	2/0	1:33
Oleai (OC)	32	1/0	1:32
Dandan (DANC)	34	1/1	1:17
Chalan Kanoa (CKC)	113	2/2	1:28
San Antonio (SAC)	32	1/0	1:32
Kagman (KAGC)	33	0/1	1:33
Tinian (TINC)	34	1/1	1:17
Rota (SNPC)	17	1/0	1:17
Total	395	16	1:25

Early Intervention Staffing Pattern

CDAC	Total
Director	1
Classroom Teacher	2
Teacher Aide	1
Clerk Typist	1
Family Partnership Advocate	1
Total	6

Early Head Start & Pre-K Head Start Staffing Pattern

Administration and Managers	Total
Director	1
Assistant Director	1
Education & Disabilities Manager	1
Health, Nutrition, Mental Health Manager	1
Environmental Health & Safety Manager	1
Supply Technician	1
Administrative Specialist	1
Administrative Officer	1
EHS Site Coordinator	1
HS Site Coordinator	0
Instructional and Family Support Staff	Total
EHS Instructor (All Centers)	7
EHS Teacher Aide (Chalan Kanoa Center)	4
EHS Teacher Aide (Dandan Center)	1
EHS Teacher Aide (Kagman Center)	2
EHS Family Partnership Advocate (All Centers)	1
HS Family Partnership Advocate (All Centers)	5
EHS/HS Practice Based Coaches	2
HS Classroom Teacher (All Centers)	11
HS Instructor (All Centers)	5
HS Teacher Aide (HS Chalan Kanoa Center)	4
HS Teacher Aide (HS Dandan Center)	1
HS Teacher Aide (Joaquina M. Rabauliman Center)	2
HS Teacher Aide (HS Kagman Center)	1
HS Teacher Aide (HS Oleai Center)	2
HS Teacher Aide (HS San Antonio Center)	1
HS Teacher Aide (HS Tanapag Center)	2
HS Teacher Aide (HS Tinian Center)	2
HS Teacher Aide (HS Sinapalo Center)	1
Early Childhood Special Education Aide (HS CKC)	2
Early Childhood Special Education Aide (HS DANC)	1
Early Childhood Special Education Aide (HS JMR)	1
Early Childhood Special Education Aide (HS KAGC)	1
Early Childhood Special Education Aide (HS OC)	1
Early Childhood Special Education Aide (HS SAC)	1
Early Childhood Special Education Aide (HS TANC)	2
Early Childhood Special Education Aide (HS TINC)	0
Early Childhood Special Education Aide (HS SNPC)	1
Total	73

Pre-K to 12th Grade Enrollment By Student Groups: Ethnicity & Citizenship

Ethnic Group	2016-2017	2017-2018	% Change
Chamorro	3,667	3,628	-1.1%
Carolinian	833	836	0.4%
Chamorro/Carolinian	127	121	-4.7%
Chuukese	531	538	1.3%
Filipino	3,435	3,362	-2.1%
Palauan	311	296	-4.8%
Pohnpeian	168	177	5.4%
Marshallese	25	24	-4.0%
Yapese	95	102	7.4%
Korean	142	119	-16.2%
Kosraean	17	18	5.9%
Caucasian	54	67	24.1%
Black-American	1	2	100.0%
Chinese	399	461	15.5%
Japanese	109	104	-4.6%
Other Pacific Islanders	37	35	-5.4%
Others	269	289	7.4%
Total	10,220	10,179	-0.4%

Citizenship Category	2016-2017	2017-2018	% Change
United States (US)	9,442	9,491	0.5%
Chuuk (FSM)	48	42	-12.5%
Republic of Philippines	423	378	-10.6%
Republic of Palau (FAS)	19	11	-42.1%
Pohnpei (FSM)	22	20	-9.1%
Republic of Marshall Islands (FAS)	2	1	-50.0%
Yap (FSM)	18	20	11.1%
Kosrae (FSM)	1	1	0.0%
South Korea	62	39	-37.1%
Republic of China	58	56	-3.4%
Japan	4	9	125.0%
Others	121	111	-8.3%
Total	10,220	10,179	-0.4%

Pre-K to 12th Grade Enrollment By Age & Grade Level

Early Intervention Program

Age	SY 2017-2018
Below 1 Year	15
1	15
2	27
Total	57

Early Head Start Program

Age	SY 2017-2018
Below 1 Year	3
1	13
2	16
Total	32

Pre-K (Head Start Program)

Age	SY 2017-2018
3	150
4	245
Total	395

Elementary School

Age	K	1st	2nd	3rd	4th	5th	6th	Total
4	2	-	-	-	-	-	-	2
5	452	17	-	-	-	-	-	469
6	44	572	16	-	-	-	-	632
7	-	96	635	14	-	-	-	745
8	-	7	82	611	20	1	-	721
9	-	-	11	128	566	20	-	725
10	-	-	3	10	139	565	4	721
11	-	-	-	2	16	132	59	209
12	-	-	-	-	4	17	6	27
16	-	-	-	-	-	-	1	1
Total	498	692	747	765	745	735	70	4,252

Middle School

Age	6th	7th	8th	Total
10	21	-	-	21
11	472	28	-	500
12	131	524	21	676
13	27	129	534	690
14	3	19	137	159
15	1	3	24	28
16	-	-	1	1
Total	655	703	717	2,075

High School

Age	9th	10th	11th	12th	Total
13	31	-	-	-	31
14	598	21	-	-	619
15	272	468	23	2	765
16	93	226	447	22	788
17	24	79	221	447	771
18	6	29	68	187	290
19	1	3	23	54	81
20	-	2	5	16	23
Total	1,025	828	787	728	3,368

Pre-K to 12th Grade: Special Education Enrollment

Early Learning Programs	Enrollment	SPED Enrollment	%
Early Intervention (3-5 year olds)	57	57	100%
Early Childhood - Early Head Start*	32	40	9.4%
Early Childhood - Pre-K (Head Start Program)*	395		
Total	484	97	20.0%

*Students who are receiving Special Education Services in the Early Head Start and Pre-K Head Start programs are enrolled into the Early Childhood Program.

Elementary	Enrollment	SPED Enrollment	%
Garapan Elementary School (GES)	595	40	6.7%
Gregorio T. Camacho Elementary School (GTC)	309	16	5.2%
Kagman Elementary School (KAG)	437	29	6.6%
Koblerville Elementary School (KES)	648	48	7.4%
Oleai Elementary School (OES)	454	30	6.6%
San Vicente Elementary School (SVS)	652	61	9.4%
Sinapalo Elementary School (SNP)	195	25	12.8%
Tinian Elementary School (TIN)	258	13	5.0%
William S. Reyes Elementary School (WSR)	704	69	9.8%
Total	4,252	331	7.8%

Middle & Jr. High School	Enrollment	SPED Enrollment	%
Chacha Oceanview Middle School (CHA)	204	15	7.2%
Dandan Middle School (DMS)	342	32	9.4%
Dr. Rita H. Inos Jr. Sr. High School (RHI)	69	8	11.6%
Francisco M. Sablan Middle School (FMS)	306	24	7.8%
Hopwood Middle School (HMS)	917	69	7.5%
Tanapag Middle School (TMS)	147	12	8.2%
Tinian Jr. Sr. High School (TJSHS)	86	4	4.7%
Total	2,075	164	7.9%

High School	Enrollment	SPED Enrollment	%
Da'Ok Academy (DA)	66	9	13.6%
Dr. Rita H. Inos Jr. Sr. High School (RHI)	151	18	11.9%
Kagman High School (KHS)	594	67	11.3%
Marianas High School (MHS)	1,601	141	8.8%
Saipan Southern High School (SSHHS)	780	78	10.0%
Tinian Jr. Sr. High School (TJSHS)	176	15	8.5%
Total	3,368	328	9.7%

Free Meal Eligibility Count

Early Learning Programs	Total Enrollment	Total Free Eligibility	% Free Meal Eligibility
Early Head Start	32	32	100%
Pre-K (Head Start)	395	395	100%
Total	427	427	100%

Elementary Schools	Total Enrollment	Total Free Eligibility	% Free Meal Eligibility
Garapan Elementary School (GES)	595	403	68%
Gregorio T. Camacho Elementary School (GTC)	309	212	69%
Kagman Elementary School (KAG)	437	290	66%
Koblerville Elementary School (KES)	648	488	75%
Oleai Elementary School (OES)	454	336	74%
San Vicente Elementary School (SVS)	652	449	69%
Sinapalo Elementary School (SNP)	195	88	45%
Tinian Elementary School (TIN)	258	147	57%
William S. Reyes Elementary School (WSR)	704	500	71%
Total	4,252	2,913	69%

Middle Schools	Total Enrollment	Total Free Eligibility	% Free Meal Eligibility
Chacha Oceanview Middle School (CHA)	208	137	66%
Dandan Middle School (DMS)	342	198	58%
Francisco M. Sablan Middle School (FMS)	306	223	73%
Hopwood Middle School (HMS)	917	583	64%
Tanapag Middle School (TMS)	147	81	55%
Total	1,920	1,222	64%

Jr. High & High Schools	Total Enrollment	Total Free Eligibility	% Free Meal Eligibility
Da'Ok Academy (DA)	66	19	29%
Dr. Rita H. Inos Jr. Sr. High School (RHI)	220	90	41%
Kagman High School (KHS)	594	321	54%
Marianas High School (MHS)	1601	781	49%
Saipan Southern High School (SSHHS)	780	394	51%
Tinian Jr. Sr. High School (TJSHS)	262	108	41%
Total	3,523	1,713	49%

Total Enrollment	10,122	6,275	62%
-------------------------	---------------	--------------	------------

Distance Education Enrollment

TERM: FALL 2016

Jr. High & High Schools	9th	10th	11th	12th	Total
Grace Christian Academy (Private School)	-	1	-	-	1
Saipan International School (Private School)	-	-	-	2	2
Dr. Rita H. Inos Jr. Sr. High School (RHI)	3	7	29	14	53
Kagman High School (KHS)	1	18	11	3	33
Marianas High School (MHS)	66	113	167	175	521
Saipan Southern High School (SSHHS)	23	22	51	37	133
Tinian Jr. Sr. High School (TJSHS)		8	14	1	23
Total	93	169	272	232	766

TERM: SPRING 2017

Jr. High & High Schools	9th	10th	11th	12th	Total
Grace Christian Academy (Private School)	-	1	-	-	1
Dr. Rita H. Inos Jr. Sr. High School (RHI)	1	21	42	11	75
Kagman High School (KHS)	2	15	32	-	49
Marianas High School (MHS)	59	123	174	82	438
Saipan Southern High School (SSHHS)	21	19	52	39	131
Tinian Jr. Sr. High School (TJSHS)	-	8	6	8	22
Total	83	187	306	140	716

TERM: SUMMER 2017

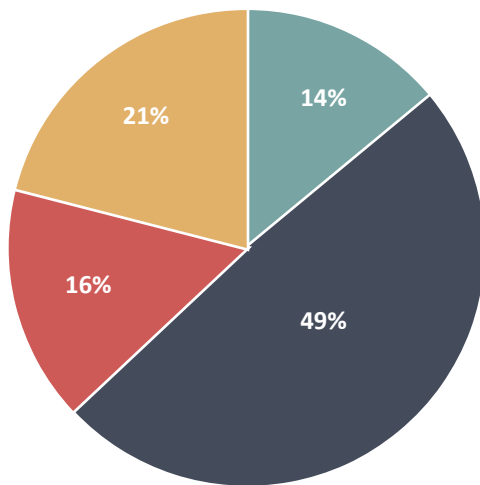
Jr. High & High Schools	9th	10th	11th	12th	Total
Grace Christian Academy (Private School)	-	4	2	-	6
Marianas Baptist Academy (Private School)	-	-	1	-	1
Mount Carmel School (Private School)	5	17	4	-	26
Dr. Rita H. Inos Jr. Sr. High School (RHI)	2	8	14	-	24
Kagman High School (KHS)	9	25	11	-	45
Marianas High School (MHS)	229	99	71	9	408
Saipan Southern High School (SSHHS)	13	31	16	-	60
Tinian Jr. Sr. High School (TJSHS)	9	6	2	-	17
Total	267	190	121	9	587
Total Enrollment	443	546	699	381	2,069

High School Graduate Data

SY 2016-2017

Public School Seniors	Beginning Enrollment* (Seniors Only)	Senior Graduates**	Junior Graduates**	Sophomore Graduates**	Total Number of Graduates**	%
Dr. Rita H. Inos Jr. Sr. High	37	38	2	0	40	108%
Kagman High	103	100	2	0	102	99%
Marianas High	315	313	15	9	337	107%
Saipan Southern High	130	128	11	0	139	107%
Tinian Jr. Sr. High	37	37	8	0	45	122%
Total	622	616	38	9	663	107%

*August 2016
**June 2017



Overall Senior Graduates Survey Results

After graduation, I plan to:	
1. Attend a Post Secondary Institution	311
2. Attend the Armed Forces	100
3. Be Employed or Seek Employment	135
4. Other/No Response	92
Total	638

Compiled: June 2017
Source: School Exit Surveys Culled by *Students First*

High School Graduate Definitions

Graduate Definitions

Term	Definition	HS Equivalency Credentials
CNMI Graduate Definition	Percentage of school completers who graduated from high school or completed an approved education program upon receipt of formal recognition from school authorities.	A Commonwealth approved program may include special education program, home-based instruction, and school-sponsored alternative programs leading to a GED or some other certification differing from the regular diploma.

Note: Source of CNMI Graduate Definition was formerly Policy 620 "Dropout Definition" from the Title 60: Board of Education Chapter 60-20 Public School System Rules & Regulations. Policy 620 had been repealed without specific replacement.

Statistical Rates

Type of Statistical Rate	Calculated Rate for CNMI PSS	Definition	HS Equivalency Credentials
Status Completion Rate (NCES)	107%	Percentage of students between grades 7 to 12 who have left high school and who hold a high school credential. This is reported to the National Center for Education Statistics (NCES).	High school equivalency credentials are NOT counted as "graduation". Example: GED & diploma earned from an online school.
Federal Cohort Graduation Rate (AFGR - Averaged Freshman Graduation Rate)	Not Currently Calculated	AFGR is an estimate of the percentage of an entering freshman class graduating in 4 years. For example: For SY 2008–09, it equals the total number of diploma recipients in 2008–09 divided by the average membership of the 8th-grade class in 2004–05, the 9th-grade class in 2005–06, and the 10th-grade class in 2006–07. Rates are based on average rates across districts within each locale type weighted by each district's enrollment base of first-time freshmen.	High school equivalency credentials are NOT counted as "graduation."
Federal Status Completion Rate	Not Currently Calculated	Percentage of young adults ages 18 to 24 who have left high school and who hold a high school credential.	People who have earned an equivalency credential count as completers.
Federal Cohort Graduation Rate (ACGR - Adjusted Cohort Graduation Rate)	Not Currently Calculated	The 4-year ACGR is the number of students who graduate in 4 years with a regular high school diploma divided by the number of students who form the adjusted cohort for the graduating class. From the beginning of 9th grade (or the earliest high school grade), students who are entering that grade for the first time form a cohort that is "adjusted" by adding any students who subsequently transfer into the cohort and subtracting any students who subsequently transfer out, emigrate to another country, or die.	High school equivalency credentials are NOT counted as "graduation."

Dropout Data

Type of Statistical Data	Total Dropout	Total Enrollment	Dropout Rate	Definition
SY14-15 Event Dropout Rate Grades 7-12	67	4,946	1.35%	Percentage of high school students who have dropped out of grades 7–12 in the past year (Students who get an equivalency certificate - such as GED - do NOT count as dropouts.)
SY14-15 Event Dropout Rate Grades 9-12	66	3,928	2.00%	Percentage of high school students who have dropped out of grades 9–12 in the past year (Students who get an equivalency certificate - such as GED - do NOT count as dropouts.)

Type of Statistical Data	Total Dropout	Total Enrollment	Dropout Rate	Definition
SY15-16 Event Dropout Rate Grades 7-12	66	4,946	1.33%	Percentage of high school students who have dropped out of grades 7–12 in the past year (Students who get an equivalency certificate - such as GED - do NOT count as dropouts.)
SY15-16 Event Dropout Rate Grades 9-12	64	3,460	1.85%	Percentage of high school students who have dropped out of grades 9–12 in the past year (Students who get an equivalency certificate - such as GED - do NOT count as dropouts.)

Type of Statistical Data	Total Dropout	Total Enrollment	Dropout Rate	Definition
SY16-17 Event Dropout Rate Grades 7-12	60	4,880	1.23%	Percentage of high school students who have dropped out of grades 7–12 in the past year (Students who get an equivalency certificate - such as GED - do NOT count as dropouts.)
SY16-17 Event Dropout Rate Grades 9-12	60	3,390	1.77%	Percentage of high school students who have dropped out of grades 9–12 in the past year (Students who get an equivalency certificate - such as GED - do NOT count as dropouts.)

Dropout Definitions

Dropout Definitions

Term	Definition
CNMI Dropout Definition	A dropout is an individual who: <ol style="list-style-type: none"> a) Was enrolled in school at any time during the previous school year; b) Was not enrolled at the beginning of the current school year; c) Has not graduated from high school or completed a Commonwealth approved educational program, and d) Does not meet any of the following exclusionary conditions: <ol style="list-style-type: none"> 1) Transfer to another public school, private school, or Commonwealth approved education program 2) Temporary absence due to suspension or school approved illness, or 3) Death
Federal Dropout Definition	The CCD defines a dropout as a student who was enrolled at any time during the previous school year who is not enrolled at the beginning of the current school year and who has not successfully completed school. Students who have transferred to another school, died, moved to another country, or who are out of school due to illness are not considered dropouts. Appendix A contains a more detailed discussion of the definition of “a dropout.” The event dropout rate describes the proportion of students who drop out in a single year. The rate is the number of students who drop out of a given grade divided by the number of students enrolled in that grade at the beginning of that school year.

Note: Source of CNMI Graduate Definition was formerly Policy 620 “Dropout Definition” from the Title 60: Board of Education Chapter 60-20 Public School System Rules & Regulations. Policy 620 had been repealed without specific replacement.

Statistical Rate

Type of Statistical Rate	Calculated Rate for CNMI PSS	Definition	Example
Event Rate (may also be referred to as the annual rate or incidence rate)	See page 18 for <i>Dropout Data</i> .	Measures the proportion of students who drop out in a single year without completing high school.	Five out of every 100 young adults (ages 15-24 in grades 10-12) enrolled in high school in October 1999 left school before October 2000 without successfully completing a high school program.
Status Rate (may also be referred to as the prevalence rate)	Not Currently Calculated	Measures the proportion of students who have not completed high school and are not enrolled at one point in time, regardless of when they dropped out.	In October 2000, 3.8 million young adults were not enrolled in a high school program and had not yet completed high school. These youth accounted for 10.9% of youth ages 16-24 in the U.S. in 2000 (NCES, 2002).
Cohort Rate (may also be referred to as the longitudinal rate)	Not Currently Calculated	Measures what happens to a single group (or cohort) of students over a period of time.	The district percentage of ninth graders in Minneapolis who were reported as dropouts four years later was 35.2% (Minnesota Department of Children, Families and Learning, 2000).

K-12th School Personnel Count Summary

Administration

Principals	20
Vice-Principals	23
Counselors	30
Support Staff	135

Total

K-12th Teaching Staff

K-12th Classroom Teachers	414
7th-12th Classroom Instructors (CTE)	19
K-8th Classroom Instructors (CCLHS)	25
K-5th Teacher Aides (CCLHS)	5
K-12th Special Education Classroom Teachers	46
K-12th Special Education Teacher Aides	104
K-5th Literacy Coaches	6
K-12th Interpreters	2

Total Total

621

Elementary Classroom Teacher* by Grade Level & Gender

	K	1st	2nd	3rd	4th	5th	6th	Total
Male	0	1	3	2	8	9	1	24
Female	28	32	29	31	23	22	3	168
Total	28	33	32	33	31	31	4	192

*Elementary Classroom Teacher count includes all Classroom Teachers only.

Total Elementary & Secondary Classroom Teacher* By Gender

Level	Male	Female	Total
Elementary	24	168	192
Secondary	112	137	249
Total	136	305	441

*Secondary Classroom Teacher count includes Classroom Teachers, CTE Teachers, & CCLHS Instructors only.

K-12th School Staffing Pattern - Administrators

Elementary Schools	Principal	Vice Principal	Total
Garapan Elementary School (GES)	1	1	2
Gregorio T. Camacho Elementary School (GTC)	1	1	2
Kagman Elementary School (KAG)	1	1	2
Koblerville Elementary School (KES)	1	1	2
Oleai Elementary School (OES)	1	1	2
San Vicente Elementary School (SVS)	1	1	2
Sinapalo Elementary School* (SNP)	1	1	2
Tinian Elementary School* (TIN)	1	1	2
William S. Reyes Elementary School (WSR)	1	1	2
Total	9	9	18

*K to 6th Grade. All others are K-5th Grade.

Middle Schools	Principal	Vice Principal	Total
Chacha Oceanview Middle School (CHA)	1	1	2
Dandan Middle School (DMS)	1	1	2
Francisco M. Sablan Middle School (FMS)	1	1	2
Hopwood Middle School (HMS)	1	2	3
Tanapag Middle School (TMS)	1	1	2
Total	5	6	11

High Schools	Principal	Vice Principal	Total
Da'Ok Academy (DA)	1	1	2
Dr. Rita H. Inos Jr. Sr. High School* (RHI)	1	1	2
Kagman High School (KHS)	1	2	3
Marianas High School (MHS)	1	2	3
Saipan Southern High School (SSHS)	1	1	2
Tinian Jr. Sr. High School* (TJSHS)	1	1	2
Total	6	8	14

*Grades 7th to 12th Grade. All others are 9th to 12th Grade.

All Total	20	23	43
------------------	-----------	-----------	-----------

K-12th School Staffing Pattern: Instructional Staff

Elementary Schools	Counselor	SpEd Teacher	SpEd TA	Literacy Coach	Inter-preter	Classroom Teacher	Instructors	CCLHS Instructor	CCLHS TA	Total
Garapan Elementary School (GES)	1	3	7	1	0	29	0	4	0	45
Gregorio T. Camacho Elementary School (GTC)	0	2	3	0	0	14	0	2	0	21
Kagman Elementary School (KAG)	1	2	5	0	0	22	0	1	2	33
Koblerville Elementary School (KES)	1	2	8	1	0	23	0	2	0	37
Oleai Elementary School (OES)	1	3	7	1	0	21	0	1	1	35
San Vicente Elementary School (SVS)	1	3	9	2	0	29	0	2	0	46
Sinapalo Elementary School* (SNP)	1	2	4	0	0	13	0	1	1	22
Tinian Elementary School* (TIN)	1	1	3	0	0	14	0	1	0	20
William S. Reyes Elementary School (WSR)	2	3	9	1	0	28	0	2	1	46
Total	9	21	55	6	0	193	0	16	5	305

*K to 6th Grade. All others are K-5th Grade.

Middle Schools	Counselor	SpEd Teacher	SpEd TA	Literacy Coach	Inter-preter	Classroom Teacher	Instructors†	CCLHS Instructor	CCLHS TA	Total
Chacha Oceanview Middle School (CHA)	0	2	3	0	0	11	0	3	0	19
Dandan Middle School (DMS)	1	2	6	0	0	18	2	2	0	31
Francisco M. Sablan Middle School (FMS)	1	2	7	0	0	13	1	1	0	25
Hopwood Middle School (HMS)	4	4	5	0	0	40	3	1	0	57
Tanapag Middle School (TMS)	1	1	3	0	0	10	1	1	0	17
Total	7	11	24	0	0	92	7	8	0	149

†Instructors include (in Secondary Schools only) Career Technical Education Instructors.

High Schools	Counselor	SpEd Teacher	SpEd TA	Literacy Coach	Inter-preter	Classroom Teacher	Instructors†	CCLHS Instructor	CCLHS TA	Total
Da'Ok Academy (DA)	1	0	0	0	0	4	0	0	0	5
Dr. Rita H. Inos Jr. Sr. High School (RHI)	1	2	4	0	0	11	3	0	0	21
Kagman High School (KHS)	4	3	5	0	1	23	3	0	0	39
Marianas High School (MHS)	4	5	6	0	0	46	2	0	0	63
Saipan Southern High School (SSHS)	3	3	6	0	0	28	2	0	0	42
Tinian Jr. Sr. High School‡ (TJSHS)	1	1	4	0	1	17	2	1	0	26
Total	14	14	25	0	2	129	12	1	0	196

‡ Grades 7th to 12th Grade. All others are 9th to 12th Grade.

All Total	30	46	104	6	2	414	19	25	4	651
------------------	-----------	-----------	------------	----------	----------	------------	-----------	-----------	----------	------------

Elementary School Staffing Pattern: Support Staff

Elementary Schools	GES	GTC	KAG	KES	OES	SVS	SNP	TIN	WSR	Total
School Nurse	0	0	0	0	0	0	0	0	0	0
Librarian	0	1	1	0	0	1	1	0	1	5
Librarian Aide	1	0	0	1	1	0	0	0	1	4
Administrative Officer	0	0	0	0	0	0	1	1	0	2
Administrative Specialist	0	0	0	0	0	0	1	0	0	1
Administrative Assistant	0	1	1	1	1	0	0	0	0	4
Secretary	0	1	0	0	0	0	0	1	1	3
Registrar	0	0	1	0	0	1	0	0	0	2
Clerk Typist	0	0	0	0	0	0	0	0	0	0
Federal Programs Coordinator	0	0	0	0	0	0	0	1	0	1
Procurement & Supply	0	0	0	0	0	0	0	1	0	1
Maintenance	1	1	1	1	1	1	0	1	1	8
Custodian	1	0	1	0	1	0	0	1	2	6
School Aide	1	0	0	2	0	0	2	0	1	6
Truant/Attendance Officer	0	0	0	0	0	0	0	0	0	0
Para Professional	0	0	0	0	0	0	0	0	0	0
Security Guard	0	0	0	0	0	0	0	0	0	0
Trades Technician	0	0	0	0	0	0	1	0	0	1
Bus Conductor	0	0	0	0	0	0	0	1	0	1
Bus Driver	0	0	0	0	0	0	0	2	0	2
General Helper	0	0	0	0	0	0	0	0	0	0
Total	4	4	5	5	4	3	6	9	7	47

Secondary School Staffing Pattern: Support Staff

Secondary Schools	CHA	DMS	FMS	HMS	TMS	DA	RHI	KHS	MHS	SSHS	TJSHS	Total
School Nurse	0	0	0	0	0	0	0	0	0	0	0	0
Librarian	0	1	0	0	0	0	0	1	0	1	0	3
Librarian Aide	1	0	1	1	1	0	1	0	1	0	1	7
Administrative Officer	1	1	0	1	1	0	1	0	1	1	0	7
Administrative Specialist	0	0	0	0	0	0	0	0	0	0	1	1
Administrative Assistant	0	0	1	0	0	0	1	1	1	1	1	6
Secretary	0	0	0	0	0	0	0	0	1	0	0	1
Registrar	1	0	0	1	0	0	0	1	0	0	0	3
Clerk Typist	0	0	0	0	0	0	0	1	0	0	0	1
Federal Programs Coordinator	0	0	0	0	0	0	1	0	0	0	0	1
Procurement & Supply	0	0	0	0	0	0	0	0	0	0	0	0
Maintenance	1	1	1	1	1	0	1	2	1	2	1	12
Custodian	1	0	0	1	0	0	1	1	0	1	1	6
School Aide	0	0	0	2	1	0	1	1	3	1	1	10
Truant/Attendance Officer	0	0	0	0	1	0	0	2	0	1	0	4
Para Professional	0	0	0	0	0	0	0	0	0	0	0	0
Security Guard	0	0	0	0	0	0	1	0	0	0	0	1
Trades Technician	0	1	0	0	0	0	0	0	0	0	0	1
Bus Conductor	0	0	0	0	0	1	0	0	0	0	0	1
Bus Driver	0	0	0	0	0	4	0	0	0	0	1	5
General Helper	0	0	1	0	0	0	0	0	0	0	0	1
Total	5	4	4	7	5	0	13	10	8	8	7	71

Central Office Staffing Pattern

STATE BOARD OF EDUCATION		Total
Administrative Officer	-	1
Administrative Specialist	-	1
School Attendance Review Committee (SARC) Coordinator	-	1
Certification & Licensure Officer	-	1
Internal Auditor	-	1
Total		5

OFFICE OF THE COMMISSIONER		Total
Interim Commissioner of Education	-	1
Executive Secretary	-	1
Administrative Specialist	-	1
Legal Counsel	Administrative Specialist	1
Early Head Start & Head Start	<i>(See Page 10 for Staffing Pattern)</i>	-
Total		4

OFFICE OF FEDERAL PROGRAMS		Total
Federal Programs Officer	-	1
Administrative Officer	-	1
Accountant	-	1
Statistician	-	1
Federal Program Coordinator	-	1
Total		5

OFFICE OF FINANCE		Total
Finance Director	-	0
Administrative Officer	-	1
Comptroller	-	1
Treasury	Treasurer	1
Payroll	Acting Payroll Supervisor	1
Payroll	Accountant	1
Travel	Accountant	3
Accounts Payables	Accountant	2
State (Local) Budget & Funds Certification	Accountant	1
Procurement & Supply	Procurement & Supply Officer	1
Procurement & Supply	Inventory Control Manager	1
Procurement & Supply	Administrative Officer	2
Procurement & Supply	Procurement & Supply Specialist	5
Total		20

Central Office Staffing Pattern *(Continued...)*

DEPARTMENT OF STUDENT & SUPPORT SERVICES		Total
Associate Commissioner of Student & Support Services	-	1
Administrative Assistant	-	1
Counseling	Counselor and Student Services Coordinator	1
Family Engagement & Community Involvement	Education Specialist	1
Americorps	Americorps Coordinator	1
Americorps	Administrative Assistant	1
Americorps	Student Mentor	48
Personal Responsibility Education Program (PREP)	PREP Director	1
Personal Responsibility Education Program (PREP)	Administrative Officer	1
Personal Responsibility Education Program (PREP)	Education Specialist	1
Junior Reserve Officers' Training Corps (JROTC)	JROTC Military Property Specialist	1
Junior Reserve Officers' Training Corps (JROTC)	Supply Specialist	2
Instructional Technology	Instructional Technology Director	1
Instructional Technology	Education Specialist	1
School Library	-	0
Cooperative Education	Education Specialist	1
Cooperative Education	Co-op Student Intern	90
Special Education (School Age Children)	SPED Program Director	1
Special Education (School Age Children)	Administrative Officer	1
Special Education (School Age Children)	Administrative Assistant	2
Special Education (School Age Children)	Secretary	1
Special Education (School Age Children)	School Psychologist	1
Special Education (School Age Children)	Audiologist	1
Special Education (School Age Children)	Personnel Specialist	1
Special Education (School Age Children)	Data Manager	1
Special Education (School Age Children)	Physical Therapist	3
English Language Learning	-	0
Leadership Corps	-	0
Early Intervention (Infants & Toddlers)	<i>(See Page 10 for Staffing Pattern)</i>	-
Total		

Central Office Staffing Pattern *(Continued...)*

DEPARTMENT OF ACCOUNTABILITY, RESEARCH, & EVALUATION		Total
Associate Commissioner of Accountability, Research, & Evaluation	-	1
Administrative Officer	-	1
Office of Accreditation	Education Specialist	1
Office of Assessment	Education Specialist	1
Office of Assessment	Summer Intern	1
Office of School Improvement & Innovation	-	0
Office of School & Program Accountability	-	0
Office of Research & Evaluation	Education Specialist	1
Office of Records & Data Management	Records Management Program Manager	1
Office of Records & Data Management	Statistical Specialist	1
Total		8

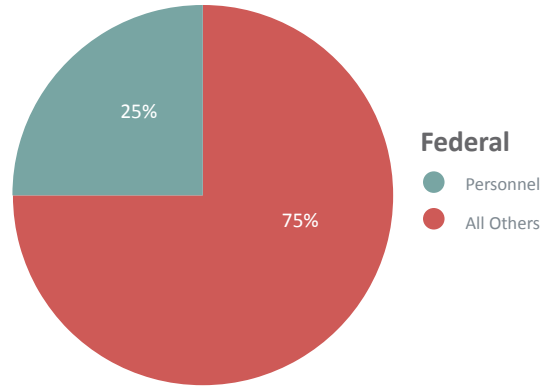
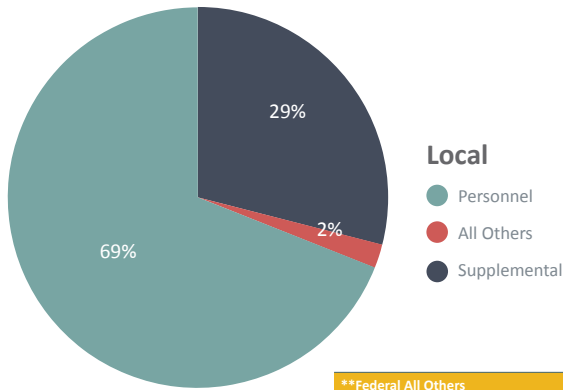
DEPARTMENT OF CURRICULUM & INSTRUCTIONS		Total
Associate Commissioner of Curriculum & Instructions	-	1
Administrative Officer	-	1
Statistical Literacy Analyst	-	1
English Language Arts	Education Specialist	1
Mathematics	Education Specialist	1
Science	Education Specialist	1
Social Studies	Education Specialist	1
Chamorro & Carolinian Language & Heritage Studies	Education Specialist	1
Physical Education	-	0
Visual & Performing Arts	-	0
Health	-	0
Career & Technical Education	Education Specialist	1
Career & Technical Education	Co-op Student Intern	14
Total		23

Central Office Staffing Pattern *(Continued...)*

DEPARTMENT OF ADMINISTRATIVE SERVICES		Total
Associate Commissioner of Administrative Services	-	1
Administrative Officer		1
Facilities Development & Management	FDM Program Coordinator	1
Facilities Development & Management	Administrative Officer	1
Facilities Development & Management	Electrician	1
Facilities Development & Management	Trades Technician	2
Facilities Development & Management	Compliance and Monitoring	1
Facilities Development & Management	Trades Specialist	1
Facilities Development & Management	Architectural Technician	1
Facilities Development & Management	Facilities & Maintenance Coordinator	1
Emergency Operations Management	Emergency Operations and Crisis Manager	1
Pupil Transportation	Pupil Transportation Manager	1
Pupil Transportation	Administrative Assistant	1
Pupil Transportation	Bus Driver	25
Pupil Transportation	Auto Chief Mechanic	1
Pupil Transportation	Bus Conductor	5
Pupil Transportation	Auto Mechanic Foreman	1
Child Nutrition Program	CNP Program Coordinator	1
Child Nutrition Program	Administrative Officer	1
Child Nutrition Program	Nutritionist	1
Child Nutrition Program	Nutrition Assistant Monitor	1
Child Nutrition Program	Part Time Food Monitor	6
Child Nutrition Program	Food Safety Specialist	1
Child Nutrition Program	Federal Program Coordinator	1
Infrastructure Technology	State Level Technology Director	1
Infrastructure Technology	Administrative Officer	1
Infrastructure Technology	Network Specialist	5
Communications Media	Education Specialist	1
Communications Media	Webmaster	1
Communications Media	Communication & Outreach Coordinator	1
Human Resources Office	Human Resources Director	1
Human Resources Office	Interim HR Assistant	1
Human Resources Office	Equal Employment Officer	1
Human Resources Office	Administrative Officer	1
Human Resources Office	Administrative Assistant	1
Human Resources Office	Personnel Specialist	4

Budget Allocation for Fiscal Year 2018

	Personnel	All Others	Supplemental†	Total
Local*	\$35,279,545.00	\$993,042.00	\$15,000,000.00‡	\$51,272,587.00
Federal**	\$10,916,798.00	\$32,852,063.00	-	\$43,768,861.00



***Local All Others**

1. Bus/ Vehicle Fuel
2. Office Supplies
3. Equipment
4. CUC Power, Water, & Sewer

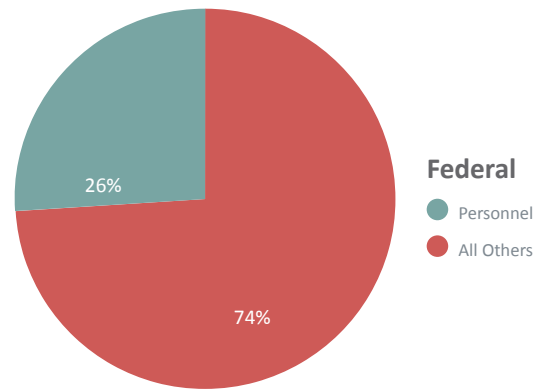
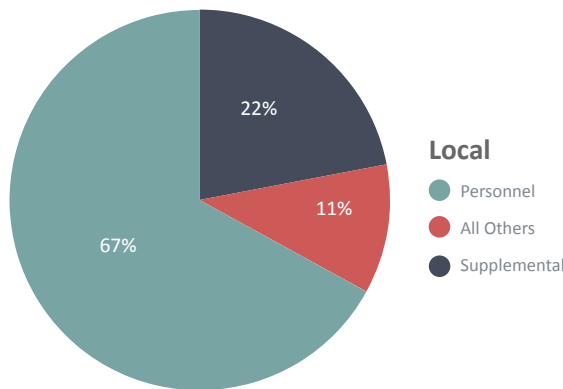
****Federal All Others**

1. Nutritious Student Meals
2. Grants to Schools for Instructional Materials and Supplies
3. Instructional Services for Private Schools
4. Support Services
5. State Assessments
6. Professional Development for Teachers and School Leaders
7. Laptop Computers for Students

*Local Funds provided by passage of CNMI Public Law 18-66.
 ** Federal Grant funds are provided by various federal agencies.
 †Supplemental provided by passage of CNMI Public Law 19-75.
 ‡As of October 2017, Supplemental figure is the CNMI PSS requested amount only.

Budget Allocation for Fiscal Year 2017

	Personnel	All Others	Supplemental†	Total
Local*	\$31,500,000.00	\$4,941,646.00	\$10,241,826.00	\$46,683,472.00
Federal**	\$9,969,430.00	\$28,352,063.00	-	\$38,321,493.00



***Local All Others**

1. Bus/ Vehicle Fuel
2. Office Supplies
3. Equipment
4. CUC Power, Water, & Sewer

†Supplemental

1. Outstanding Balance owed to school meal vendors
2. Outstanding Balance owed to CUC
3. School Repairs & Maintenance
4. Purchase of five (5) School Buses
5. Primary Instructional Materials for Language Arts, Math, Science, and Social Studies
6. SNP & RHI School Operations, Furniture & Fixtures, and Repair of Benches & Facilities
7. Replacement of TIN Perimeter Fence and for Other Required Facilities Repairs at TIN and TJSMS

****Federal All Others**

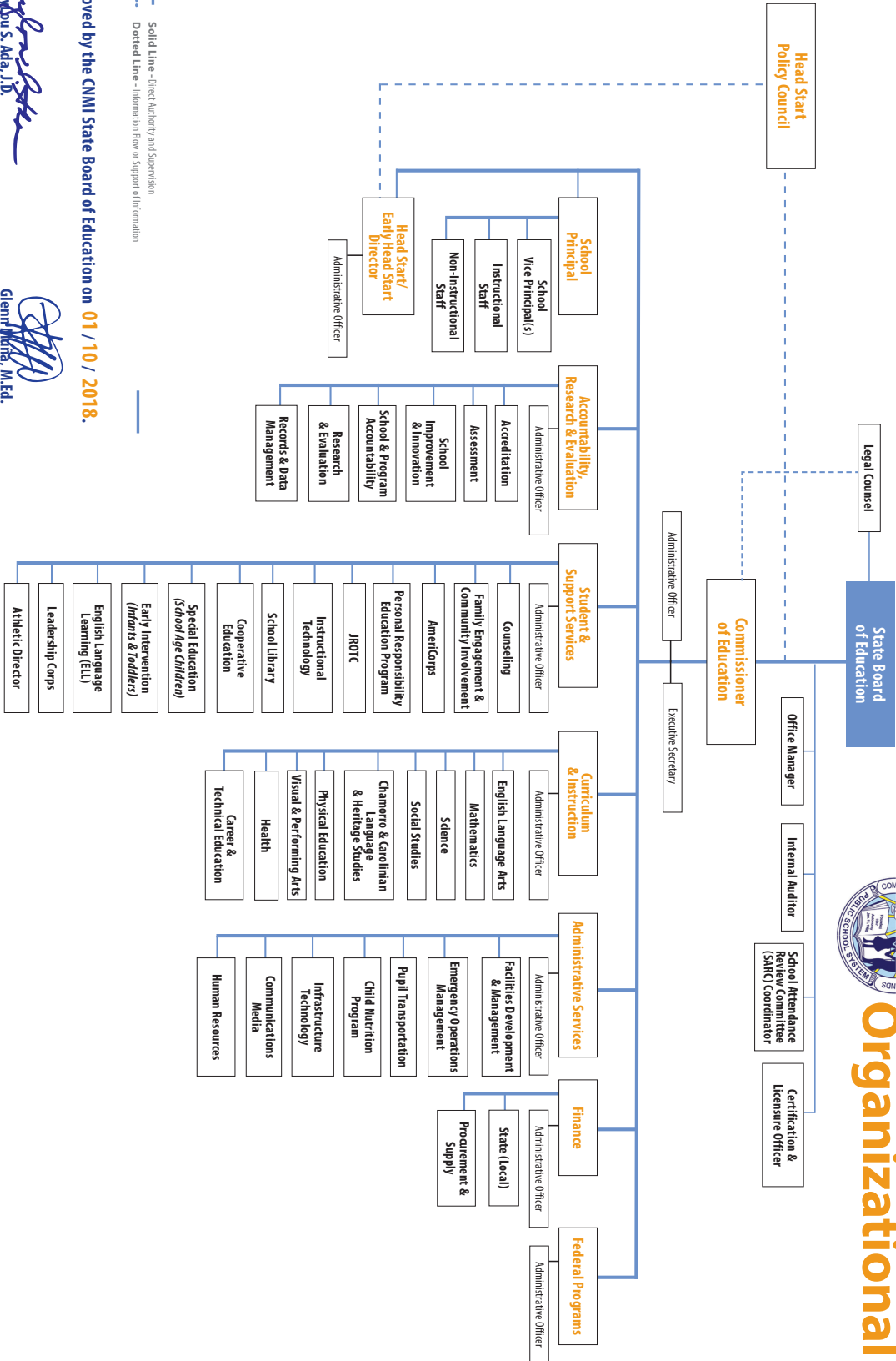
1. Nutritious Student Meals
2. Grants to Schools for Instructional Materials and Supplies
3. Instructional Services for Private Schools
4. Career & Technical Education
5. State Assessments
6. Professional Development for Teachers and School Leaders
7. iPads for Students
8. Cooperative Education
9. Digital Classrooms
10. Distance Education

*Local Funds provided by passage of CNMI Public Law 18-66.
 ** Federal Grant funds are provided by various federal agencies.
 †Supplemental provided by passage of CNMI Public Law 19-75.



CNMI Public School System Organizational Chart

Revised 12/07/2017



Legend
 Solid Line - Direct Authority and Supervision
 Dotted Line - Information flow or Support of Information

Approved by the CNMI State Board of Education on **01 / 10 / 2018**.

Marylou S. Ada, J.D.
 Chairwoman, State Board of Education

Glenn Parks, M.Ed.
 Interim Commissioner of Education



STUDENTS FIRST

CNMI PUBLIC SCHOOL SYSTEM
FACTS & FIGURES

P.O. Box 501370 CK, Saipan, MP 96950
Office (670) 237-3061 • Fax (670) 664-3798

www.cnmipss.org